



# AI AND JEW

DEMYSTIFYING ARTIFICIAL INTELLIGENCE and its JEWISH ETHICAL  
IMPLICATIONS

# OUR AGENDA

What AI is NOT

Judaism and AI

What AI Is

- Definitions

- AI in Your Life

- A Brief History of AI

The Jewish Ethical Questions and Concerns about AI

Questions & Conclusions

# WHAT IS INTELLIGENCE IN JUDAISM?

Comes from the shoshon, which forms the preposition, which means between.

G-d distinguishes between things created, and also judges if they are good. We are created in G-d's image.

Is that a core ethical caution that Judaism has for AI?

בראשית ברא אלהים את השמים ואת הארץ  
והארץ היתה תהו ובהו וחשך על־פני תהום ורוח אלהים מרחפת  
על־פני המים  
ויאמר אלהים יהי אור ויהי־אור  
וירא אלהים את־האור כ־טוב ויבדל אלהים בין האור ובין החשך  
ויקרא אלהים־לאור יום ולחשך קרא לילה ויהי־ערב ויהי־בקר יום  
אחד {פ}

# AI: THE GOLEM?

AI, like the Golem, represents the human desire to create  
The Golem often represents human hubris  
AI is responsible for the security and safety of Jews!



# AI: PERSONHOOD IN JUDAISM

*AI is NOT SENTIENT YET*



development of  
computer systems able to  
perform tasks that  
normally require human  
intelligence, such as  
visual perception, speech  
recognition, decision-  
making, and translation

# WHAT IS ARTIFICIAL INTELLIGENCE?

# WHAT IS A NEURAL NETWORK?

In machine learning, a neural network is a model inspired by the structure and function of biological neural networks in animal brains.

# WHAT IS MACHINE LEARNING?

instructions, by using algorithms and statistical models to analyze and draw inferences from patterns in





# WHAT IS DEEP LEARNING?



# WHAT IS A LARGE LANGUAGE MODEL (LLM)?

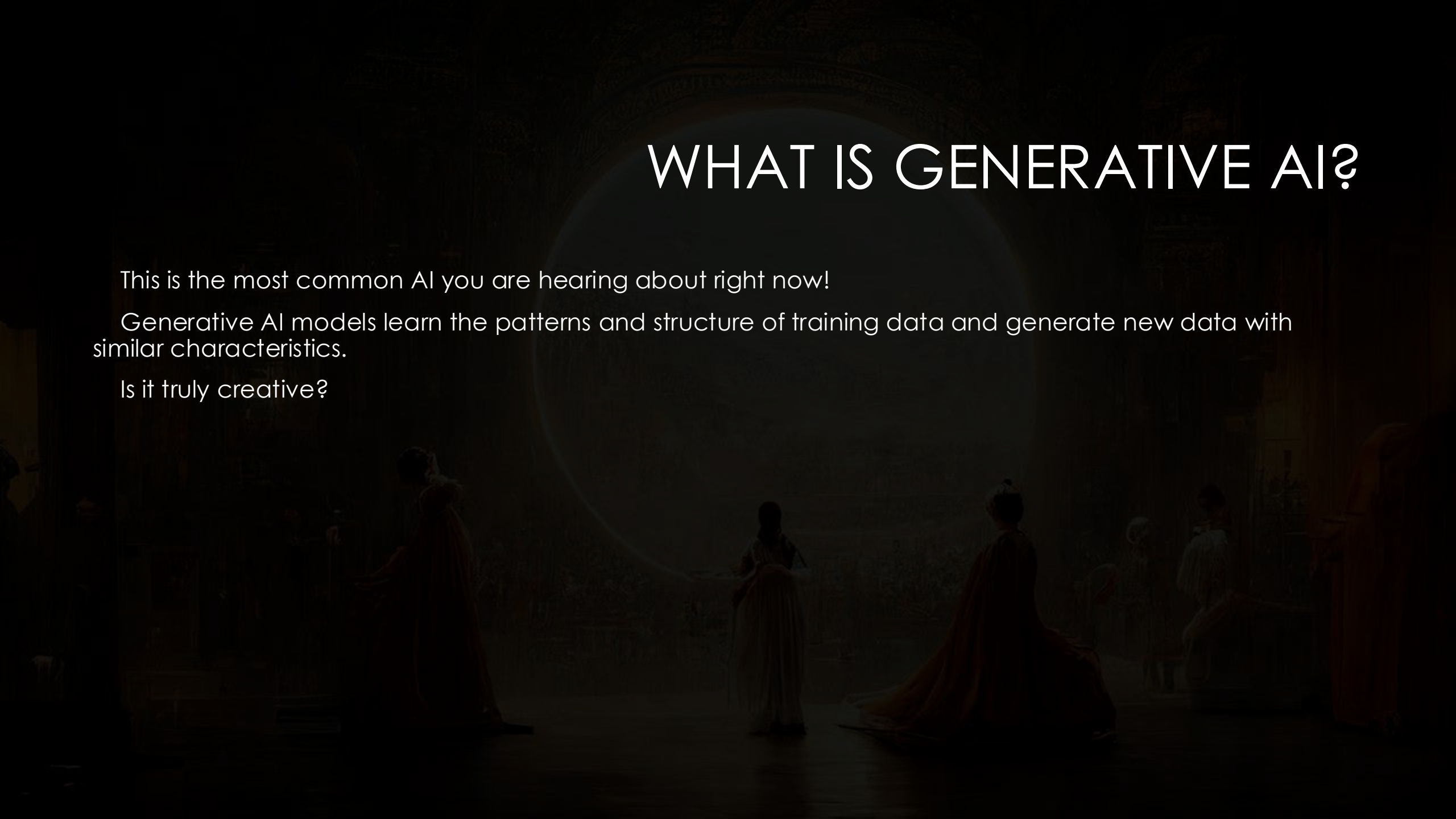
A large language model (LLM) is a type of AI program that can recognize and generate text, among other things. LLMs are trained on huge sets of data using machine learning (deep learning).

# WHAT IS GENERATIVE AI?

This is the most common AI you are hearing about right now!

Generative AI models learn the patterns and structure of training data and generate new data with similar characteristics.

Is it truly creative?





# WHAT IS PREDICTIVE AI?

Good example from systems I have worked on:

AI models can outperform physicians in radiology diagnostic accuracy

We can predict cardiac events based off of data collected from Internet-connected glucosimeters, scales, rhythm management units

We can automate accurate predictions of Chronic Kidney Disease (CKD)

Assessing and Predicting Quality of Care Gaps using Medicare Data

HINDSIGHT BIAS

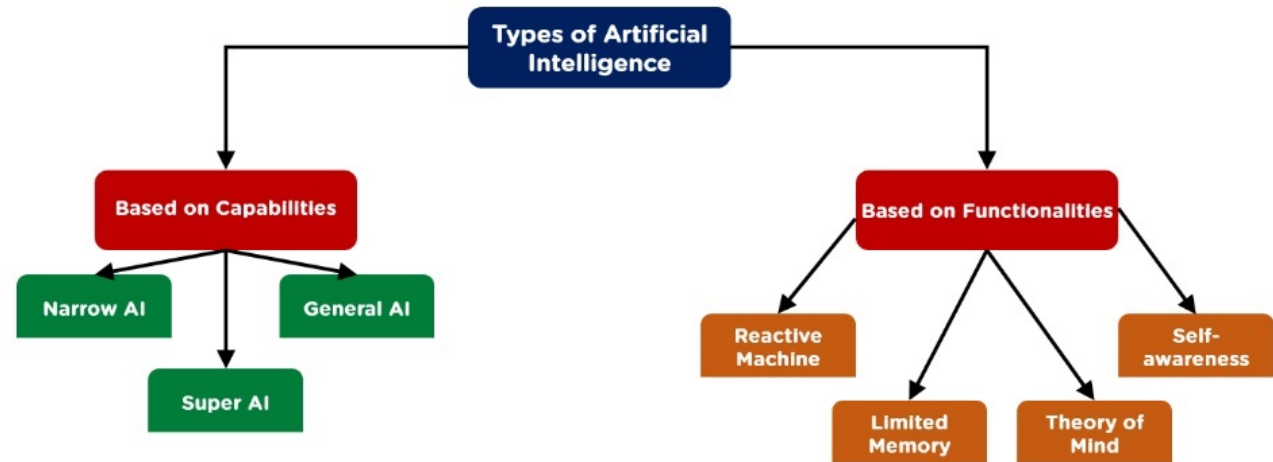




# UNDERSTANDING AI BY CAPABILITY AND FUNCTION

Capabilities are the general intelligence capabilities of AI, which is largely the broad theory-based categorization of AI.

Functionalities are what the real descriptions of what AI actually does. All four functionalities can exist with in each of the capabilities. Some are ONLY hypothetical.



# AI STUDY: SENTENCING

PRO:

Can enhance efficiency and fairness

Can increase transparency

CON:

Data with implicit bias can embed implicit bias in algorithms

Can decrease transparency

# AI IS CALLING YOU FROM INSIDE THE HOUSE



YOUR CAR



YOUR PHONE



YOUR FINANCES



MANUFACTURING  
OF PRODUCTS YOU  
BUY



CUSTOMER SERVICE



YOUR HEALTHCARE

# YOUR PHONE

Compute power is orders of magnitude more voluminous than 40 years ago

available computing

place at once as compute power scales that enables AI





# YOUR FINANCES

Fraud detection

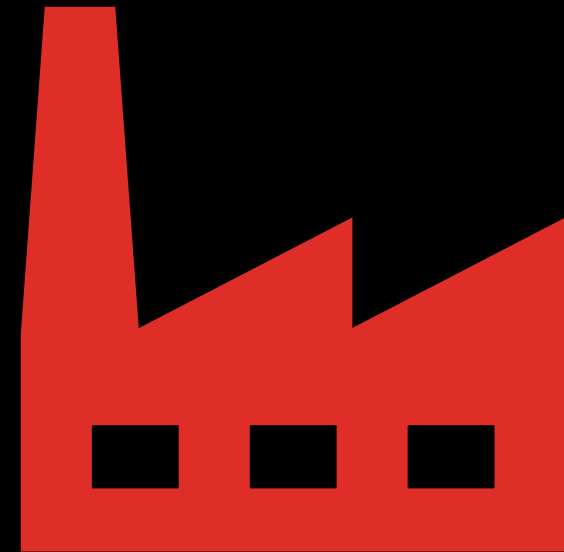
Portfolio Management

Mobile Deposits



# MANUFACTURING

Augments Production Engineering  
Forecasts raw material pricing  
Robotics automation



# CUSTOMER SERVICE

Online customer service is usually driven by chat bots

Telephonic customer service will soon be AI indistinguishable from real humans



# HEALTHCARE

Prototyping new medicines

Improving or replacing human diagnosis

Increasing access to care

Predicting disease

Identifying very specific at-risk populations







# A HISTORY OF ARTIFICIAL INTELLIGENCE



# THE TURING TEST AND COMPUTE POWER



	vowel	consonant
vowel	.128	.872
consonant	.663	.337

# ANDREY MARKOV

Markov Chains are still used to model for machine learning and AI even today!

pertaining to probabilistic text generation.



# HAROLD COHEN



# CHATGPT, MACHINE LEARNING TRAINING, AND MY ACTUAL DYSTOPIAN NIGHTMARE

Designed to mimic a human conversationalist

Uses reinforcement learning from human feedback as well as supervised learning.



# THE JEWISH ETHICS OF AI

Digital Surveillance

Writing Rabbinical Sermons

Can AI be our Shabbos Goy? (we hate that term!)

AI Robotics in *schechita*

Automating *shatnez* checks



# AI: LIES ABOUT THE HOLOCAUST AND ANTISEMITISM

A report published in June by UNESCO and WJC indicates AI could spread false and misleading claims about the Holocaust.

Deepfakes

Simulations of historical figures, like Hitler

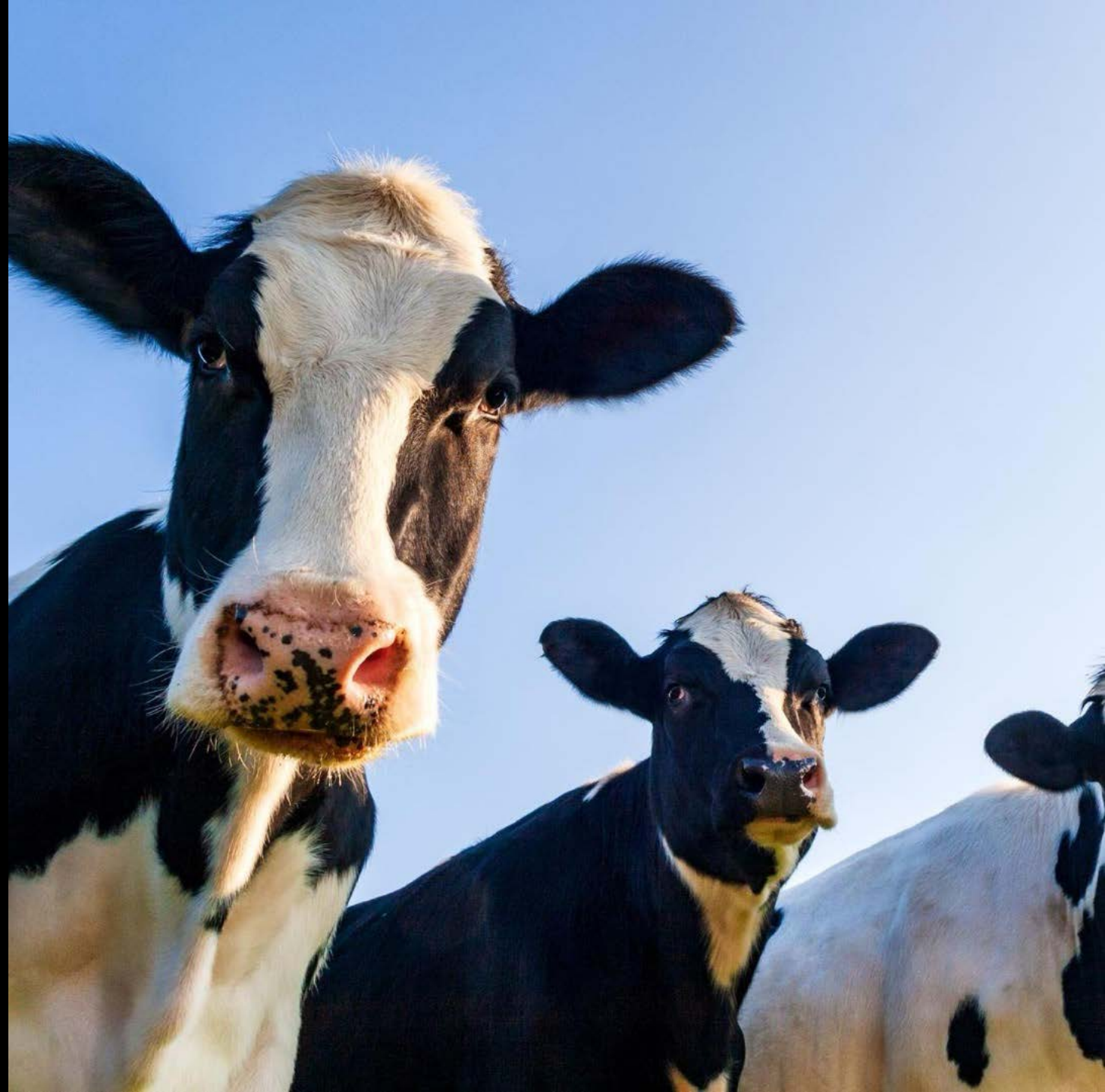
# AI AND SHECHITA (SLAUGHTER)

Recognize animals, people, and objects

Recognize fevers and wounds on cows

Analyzing physical/chemical data points on cows

AI is instrumental in alternative protein creation



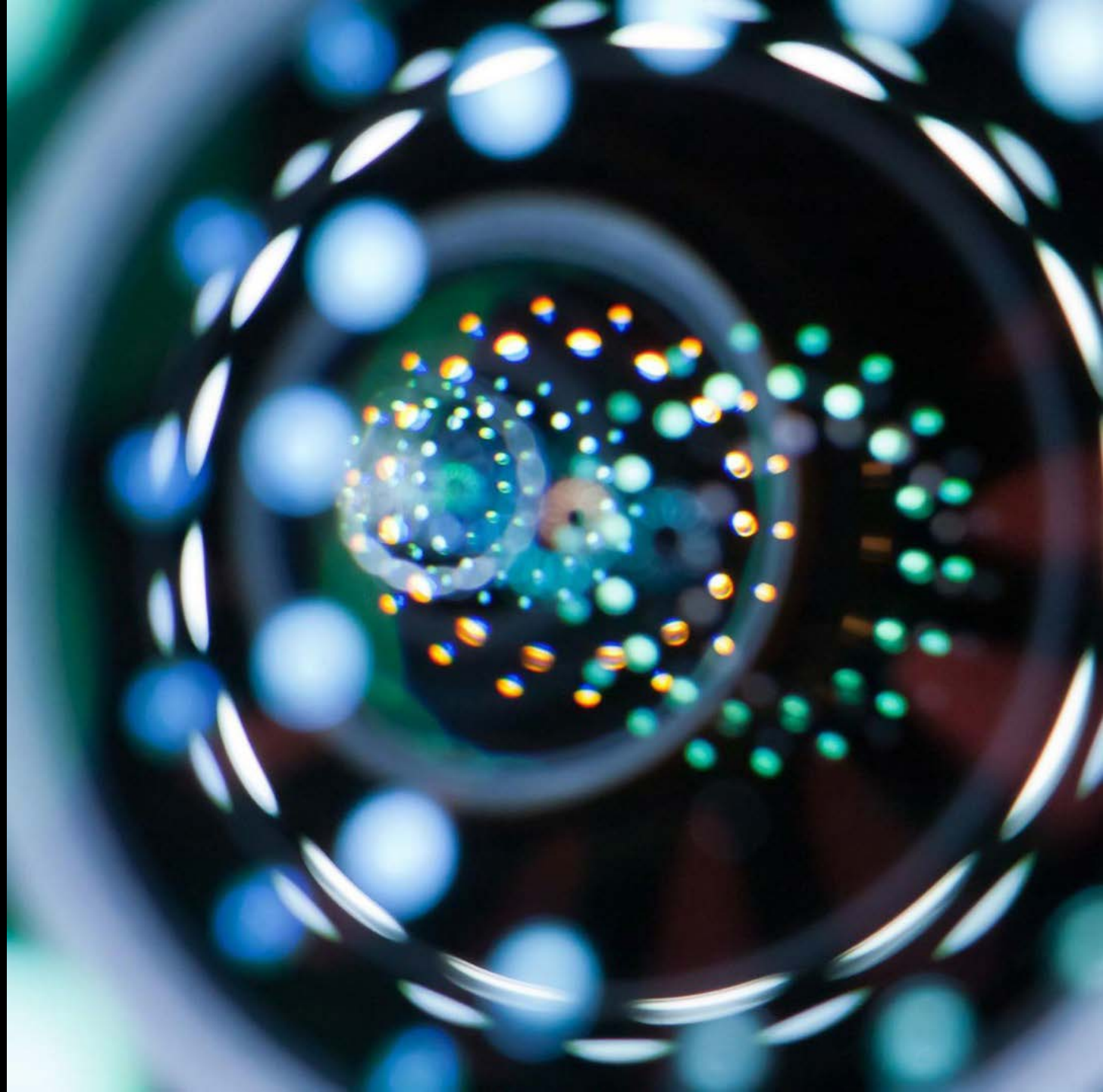


# AI, DIGITAL INTRUSION, AND HUMAN DIGNITY

Mah tovu and whatnot

Hezek

Kavod habriyot



# A JEWISH CALL TO ACTION



Jews should support digital privacy laws



Deeper regulatory control over models involving personal data



Genetic data should not be available to offshore investors / bad actors



Pay attention to what is happening!



# QUESTIONS & CONCLUSION

Any questions about AI? Your own thoughts on its use?

## RECOMMENDED READING:

Computing Machinery and Intelligence Alan Turing:

<https://academic.oup.com/mind/article/LIX/236/433/986238>

What Artificial Intelligence has in Store for Judaism Mosaic:

<https://mosaicmagazine.com/essay/politics-current-affairs/2024/03/what-artificial-intelligence-has-in-store-for-judaism/>

[https://vuir.vu.edu.au/42484/1/From-the-Tree\\_of\\_%20Knowledge-](https://vuir.vu.edu.au/42484/1/From-the-Tree_of_%20Knowledge-)

[FinalFeb24%202020.pdf](https://vuir.vu.edu.au/42484/1/From-the-Tree_of_%20Knowledge-FinalFeb24%202020.pdf) contains ponderings I think are ahead of where we are

AI and the Holocaust: Rewriting History:

<https://unesdoc.unesco.org/ark:/48223/pf0000390211>